

**2019**

2017	2018	2019
------	------	------

环境污染防治标准日趋严格,公司未来将持续面临安全环保压力。

可转债到期

2019

# 4

2019

	2019		2020	
		2019	3	223
474	2019	6	10	
				3.40
				0.50%
1.30%				0.70%
	2.00%		2.50%	3.00%

1.

1

**2020**

LPR



2.

/

Wind

B.

[2010]32

2025            2015 28

2018 4

2020



1 /

4. %

	2017	2018	2019	2020	2019
	4.44	6.32	10.12	1.30	2.45
1	3.92	4.70	5.39	1.13	1.42
%	88.23	74.36	53.26	86.92	57.96
2	0.44	1.55	4.69	0.14	1.02
%	9.82	24.53	46.34	10.77	41.63

2019

2020 3

5.

%

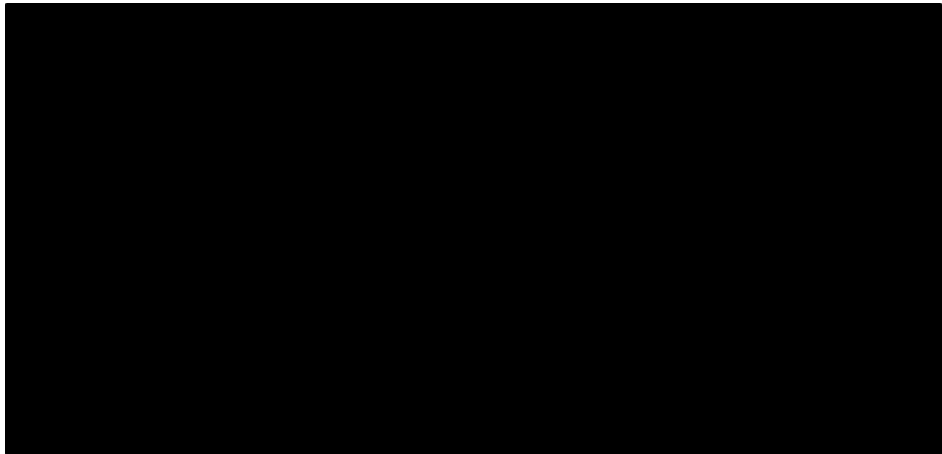
	2017	2018	2019	2020	2019
	7,500.00	7,500.00	10,000.00 <sup>5</sup>	2,500.00	1,875.00
	11,328.30	17,786.96	17,254.71	2,906.43	4,031.24

96.92%

b

7.

/



2019

2017-2019

16.84%

2019

2018-2019

14.14% 2,023.20 2019

2019 36.57% 1,042.37

9. ( / )

	2017	2018	2019	2020	2019
	4,165.25	8,360.22	8,634.67	1,472.92	745.77
	1.31	1.19	1.00	0.93	1.27
	1,473.42	1,362.77	4,015.83	1,252.29	348.65
	0.88	0.95	0.74	0.58	0.75
	627.93	960.82	931.95	170.00	260.22
	2.07	2.75	2.35	1.76	2.51

B.

		EPC		
2017-2019		36	33	64
	3,000t/a		2	
MTBE			0.44	1.55
2019				4.69
				30%
		60%	10%	
2020				
		0.14		

b

2018 6 2019 2

2

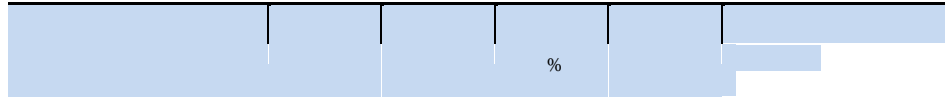
10.

= -

2017-2019			4.44	6.32	10.12
1.79	2.61	5.04		0.79	

12.

	2017	2018	2019		



2020 5 25

2020 6 23

1.

2017-2019

	--		
		2019	2019
		( [2019]6 )	10
2019		Ionex Engineering BVBA	
PuriTech Ltd. 2		12	488
2020 3			
		7	

<sup>10</sup>

37 -- 23 --

22 --  
24 --







	2017	2018	2019	2020
	0.02	-	0.05	-
	-0.57	-0.07	-2.65	-0.17

2019

		2017-2019	2020
	-0.57	-0.07	-2.65
			-0.17

3

19.

	2017	2018	2019	2020
	0.06	0.18	0.54	0.01
	-0.02	3.22	-0.07	-0.01
	-	-2.29	2.51	-
	0.04	1.11	2.98	-0.0005

04

		2017-2019	2020
		1.11	2.98
			-4.63
			2019
	-0.07	2018	2019
	-2.29	2.51	

4.

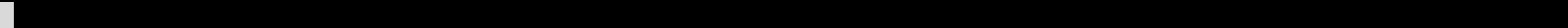
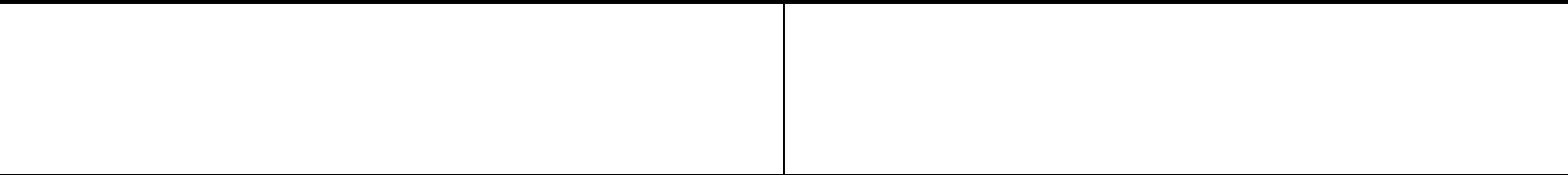
20.

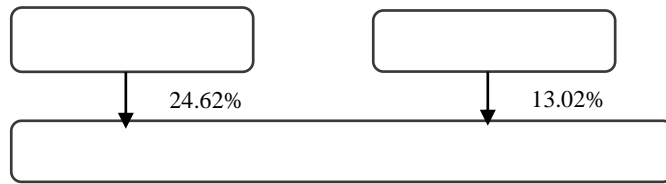
CR

	2017	2018	2019	2020	3
	6.79	11.77	10.68		11.25
%	64.07	63.371			

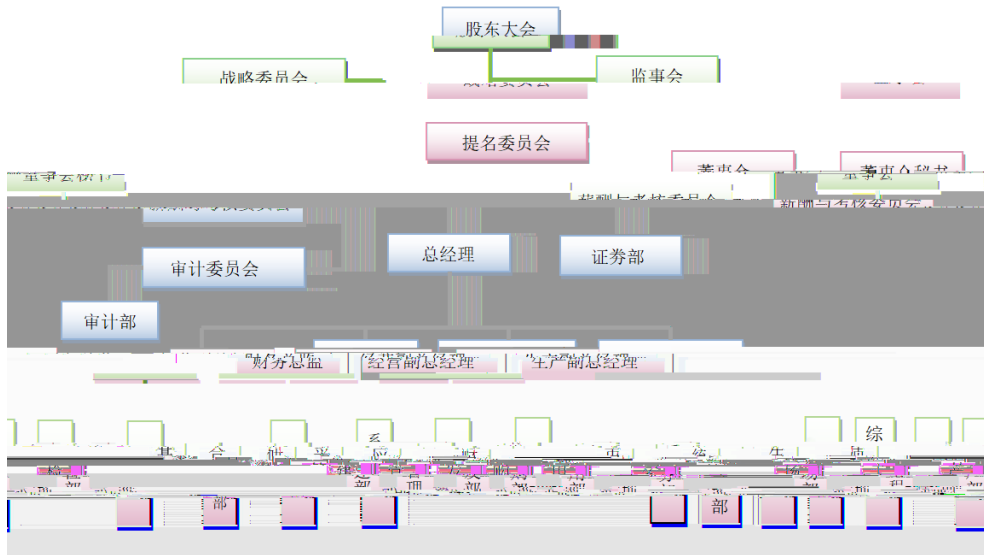
	2017	2018	2019	2020	3
--	------	------	------	------	---







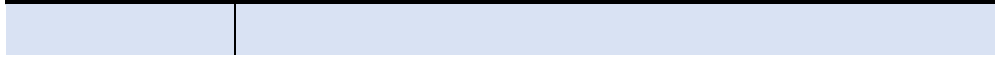
2020 3



2020 3







AAA

